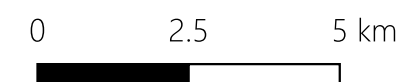
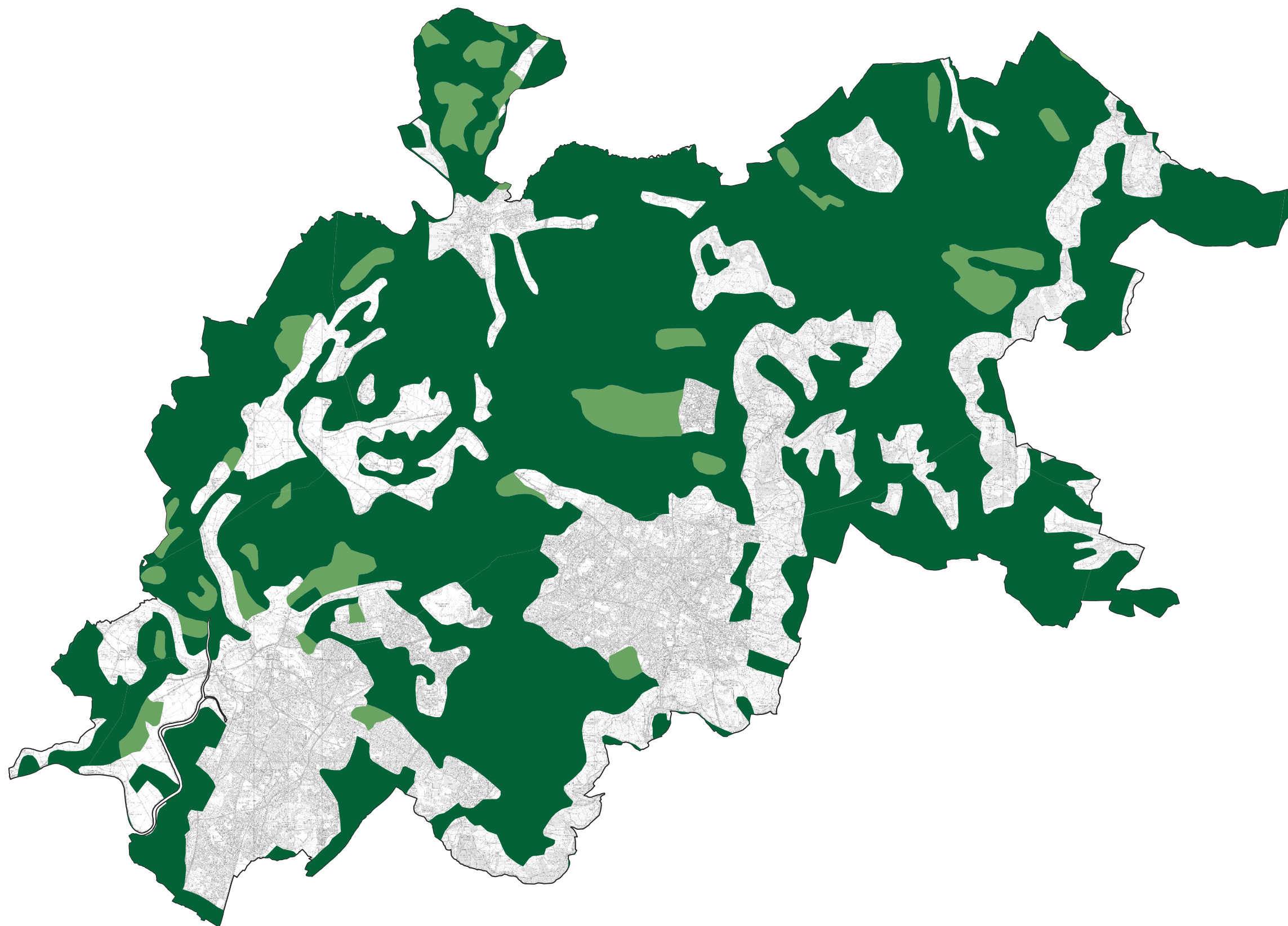




# Agricultural Land Classification Grade 2 and Grade 3 Across CGTSLP Authorities

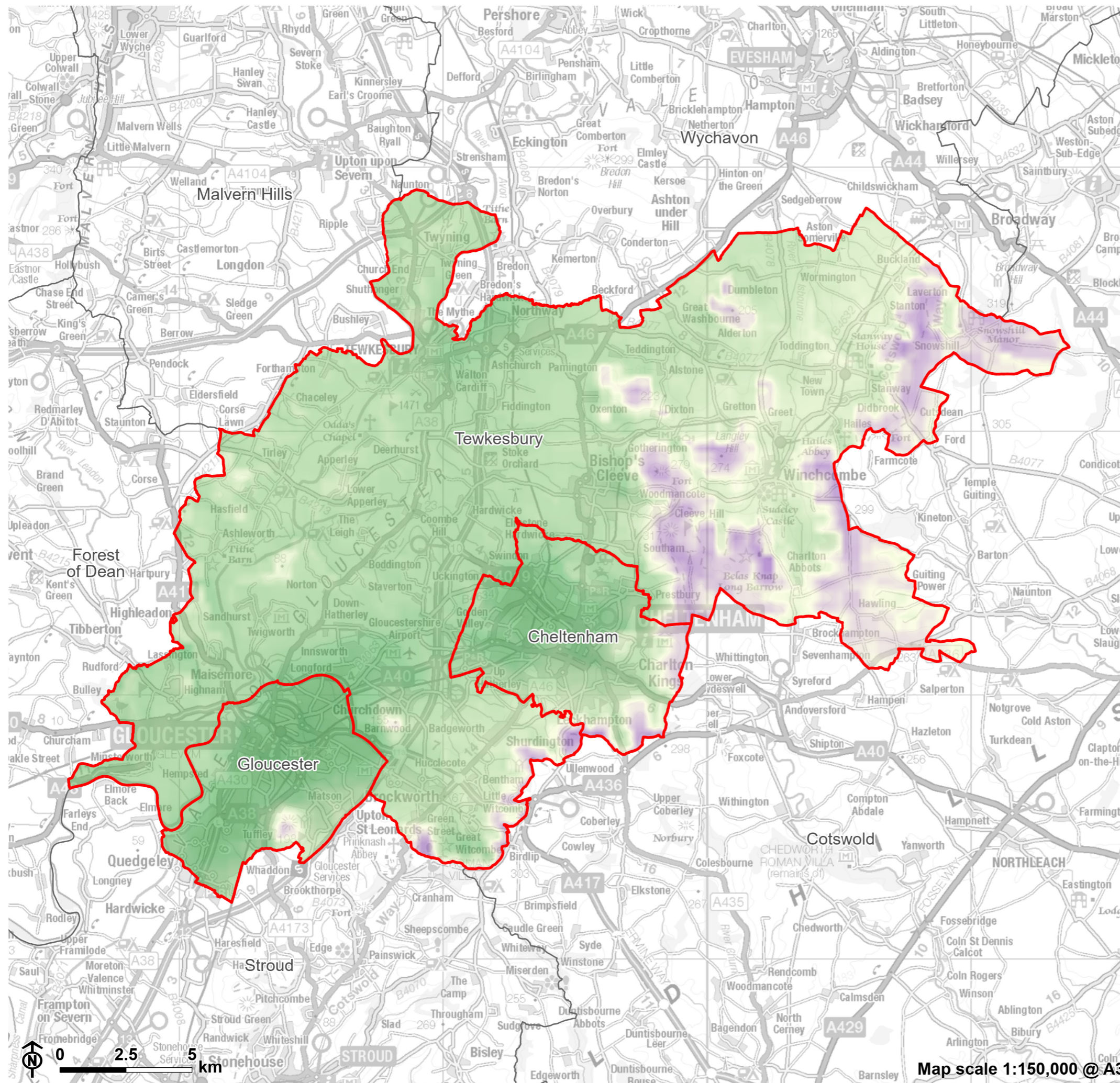
Agricultural Land Classification

- Grade 2
- Grade 3



Project Renewable Energy Assessment for Gloucester City Council, Cheltenham Borough Council and Tewkesbury Borough Council (CGTSLP)

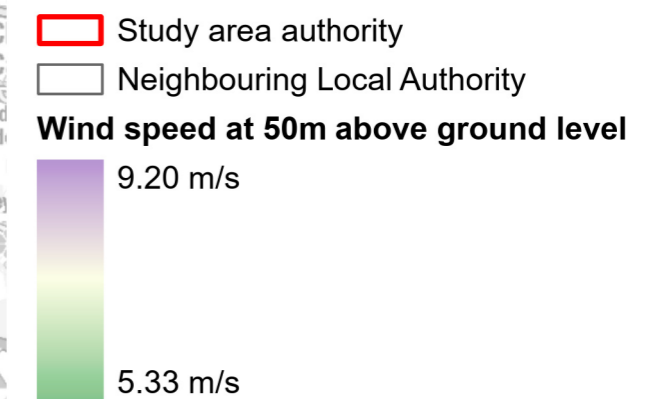
Scale 1:125,000



Renewable Energy Assessment  
for Gloucester City Council, Cheltenham  
Borough Council and Tewkesbury  
Borough Council



**Figure B.1: Wind Constraints - Wind speed at 50m above ground level**

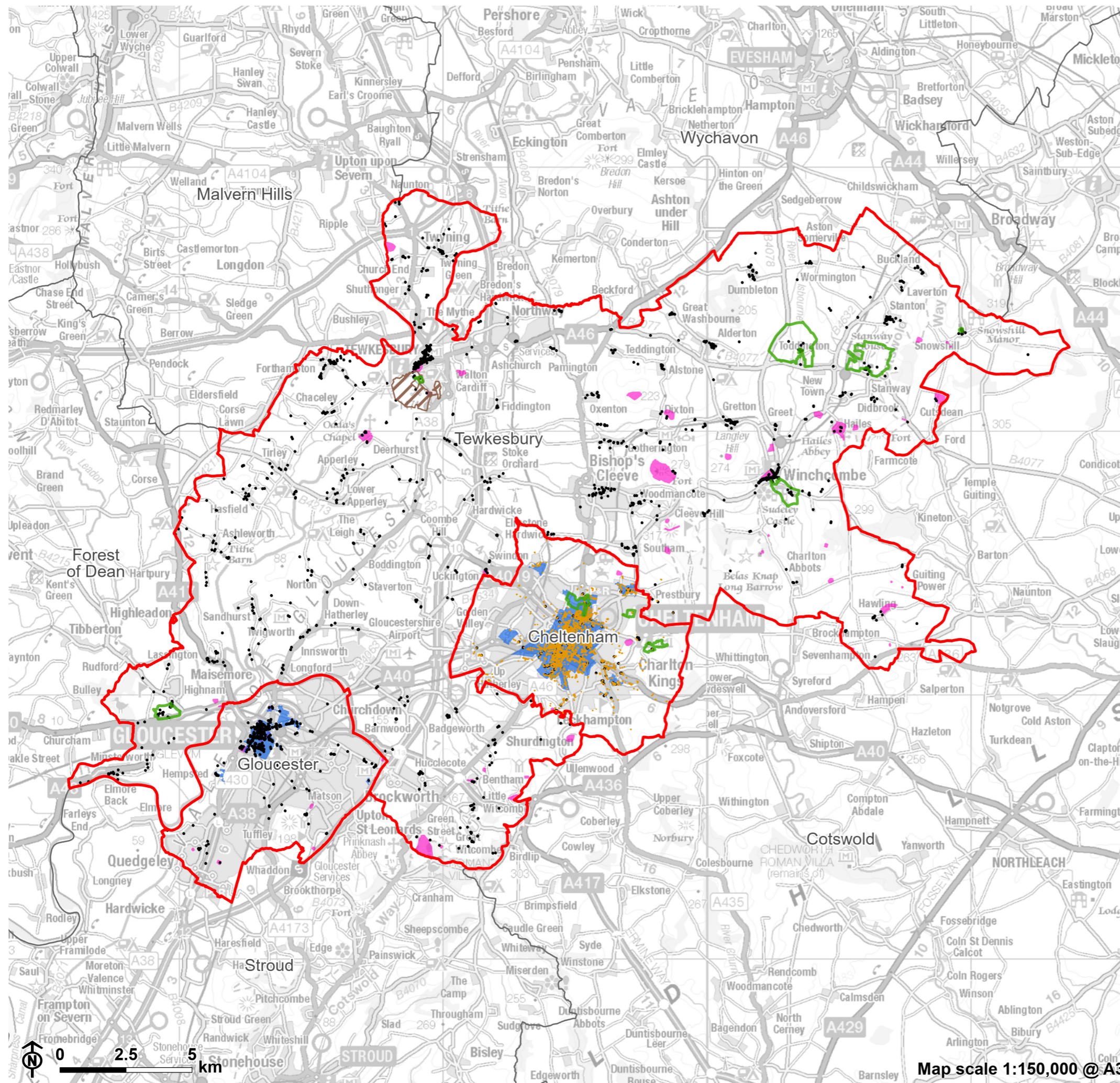


**Notes:**

Global Wind Atlas 3.0, a free, web-based application developed, owned and operated by the Technical University of Denmark (DTU). The Global Wind Atlas 3.0 is released in partnership with the World Bank Group, utilizing data provided by Vortex, using funding provided by the Energy Sector Management Assistance Program (ESMAP). For additional information: <https://globalwindatlas.info>

Map scale 1:150,000 @ A3



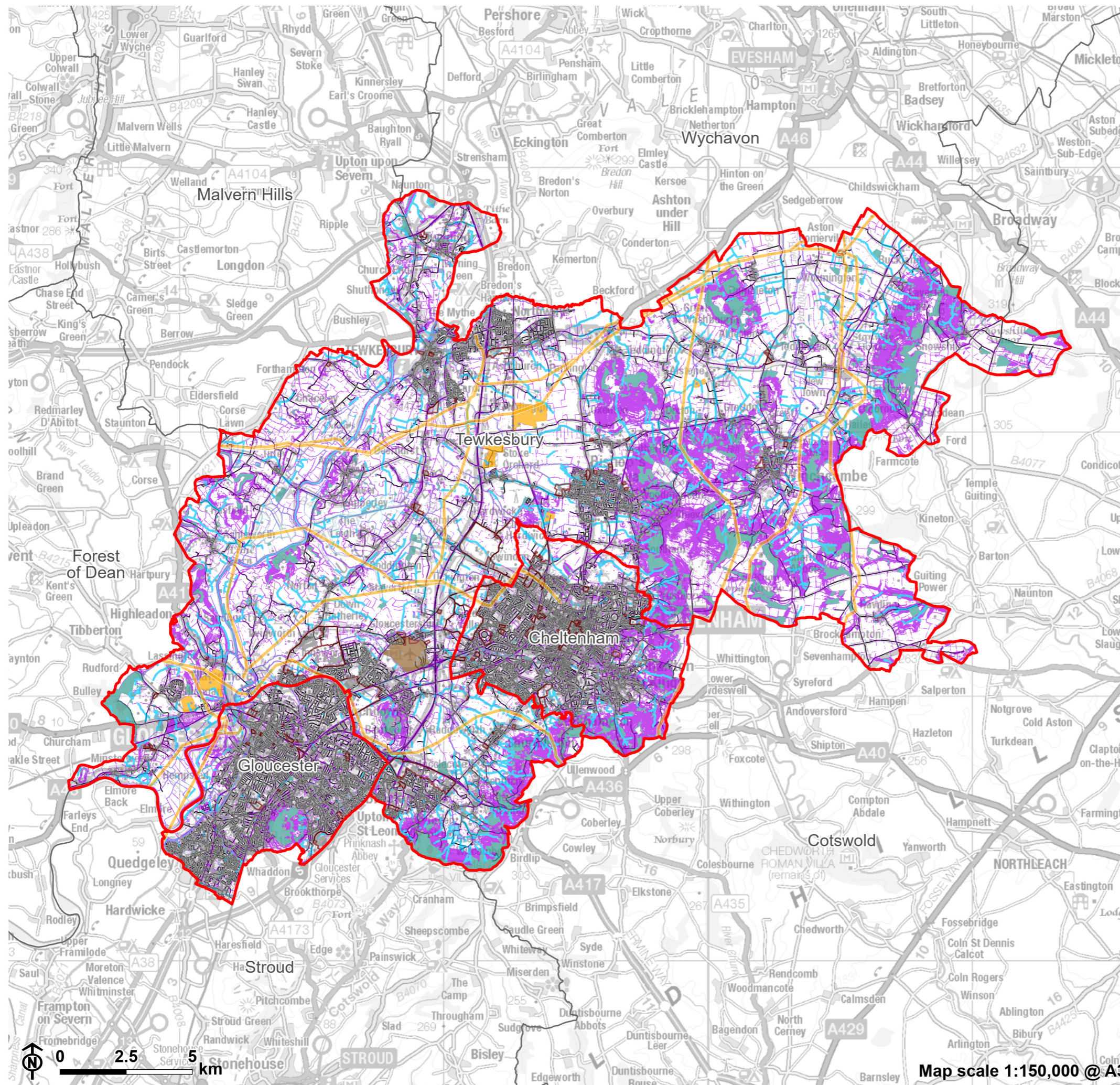


Renewable Energy Assessment  
for Gloucester City Council, Cheltenham  
Borough Council and Tewkesbury  
Borough Council



**Figure B.3: Wind constraints - Cultural  
heritage constraints**

- Study area authority
- Neighbouring Local Authority
- Registered Parks and Gardens
- Registered Battlefield
- Locally Listed Building
- Listed Building
- Conservation area
- Scheduled Monument



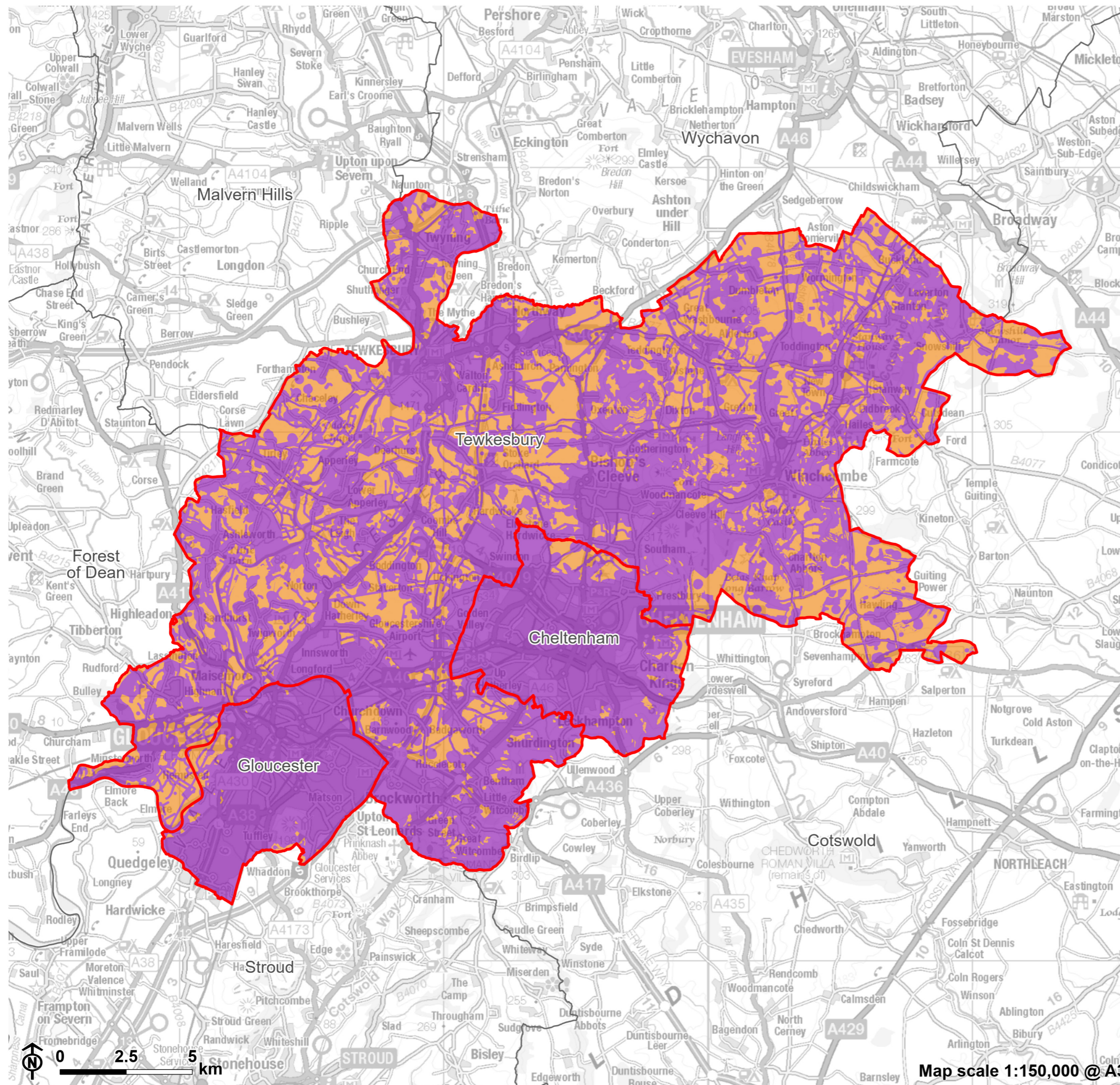
Renewable Energy Assessment  
for Gloucester City Council, Cheltenham  
Borough Council and Tewkesbury  
Borough Council



**Figure B.4: Wind constraints - Physical constraints**

- Study area authority
- Neighbouring Local Authority
- Roads and railways
- Electricity lines and gas pipelines
- Airports and airfields
- Building
- Watercourses and water bodies
- Existing renewable development
- Slope above 15%
- Woodland
- Future developments, safeguarded land and employment sites

**Notes:**  
MOD land was also treated as a constraint.  
However, due to the sensitive nature of this data,  
this is not presented on this map.

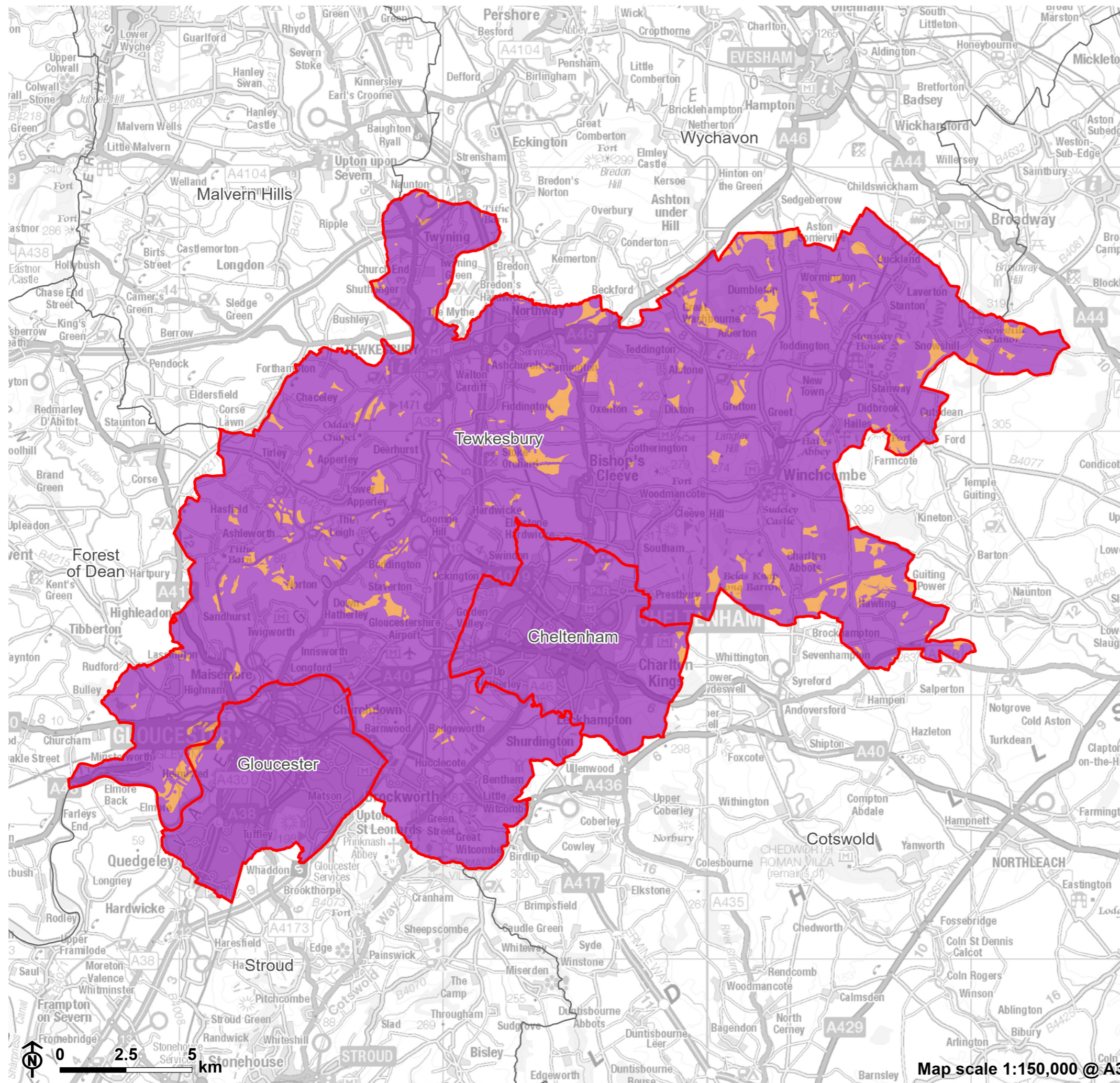


Renewable Energy Assessment  
for Gloucester City Council, Cheltenham  
Borough Council and Tewkesbury  
Borough Council



**Figure B.5: Opportunities and constraints:  
Small scale wind development**

- Study area authority
- Neighbouring Local Authority
- Technical potential for small wind
- Constrained area for small wind

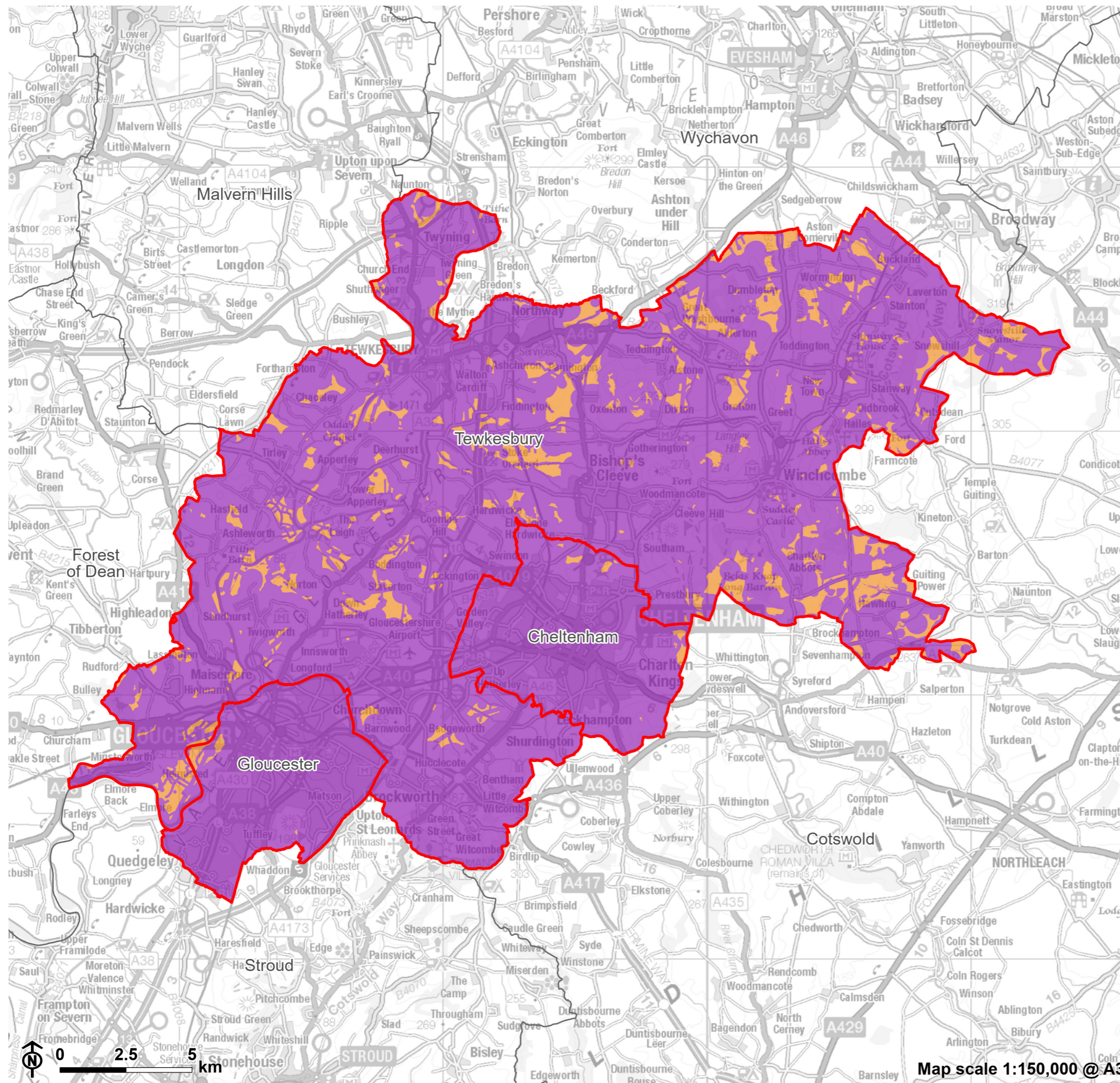


Renewable Energy Assessment  
for Gloucester City Council, Cheltenham  
Borough Council and Tewkesbury  
Borough Council



**Figure B.7: Opportunities and constraints:  
Large scale wind development**

- Study area authority
- Neighbouring Local Authority
- Technical potential for large wind
- Constrained area for large wind

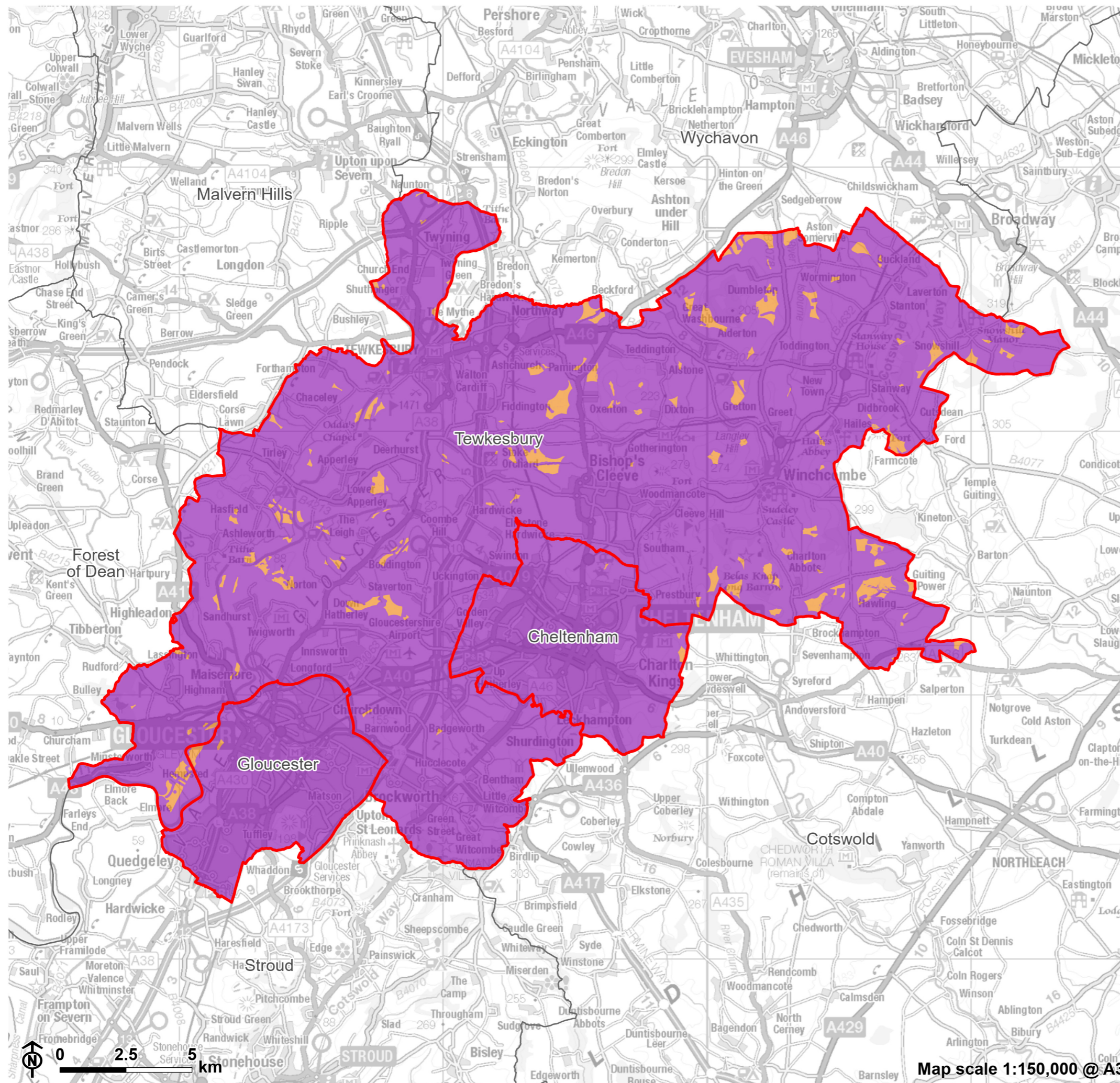


Renewable Energy Assessment  
for Gloucester City Council, Cheltenham  
Borough Council and Tewkesbury  
Borough Council



**Figure B.6: Opportunities and constraints:  
Medium scale wind development**

- Study area authority
- Neighbouring Local Authority
- Technical potential for medium wind
- Constrained area for medium wind

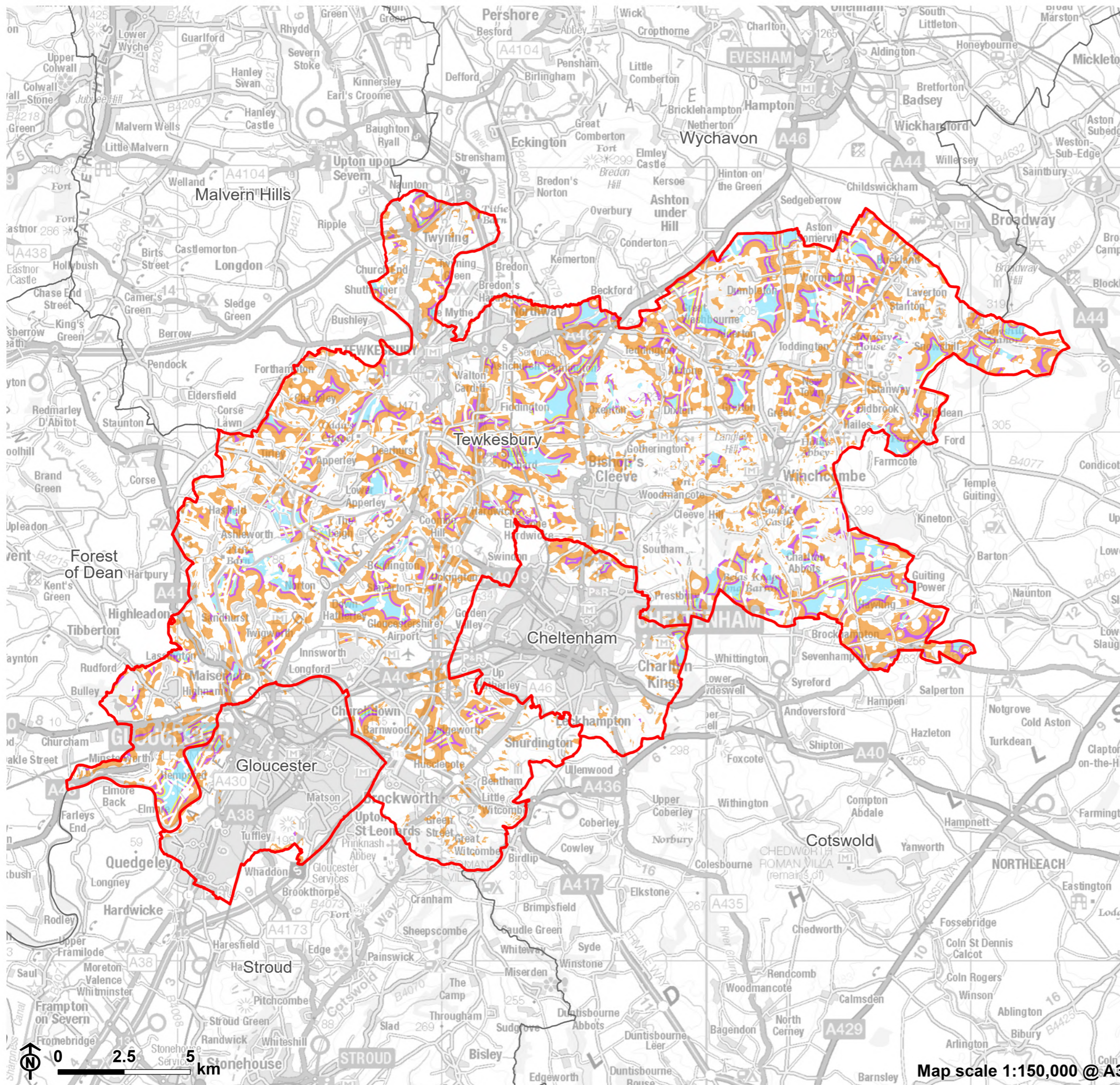


Renewable Energy Assessment  
for Gloucester City Council, Cheltenham  
Borough Council and Tewkesbury  
Borough Council



**Figure B.8: Opportunities and constraints:  
Very large scale wind development**

- Study area authority
- Neighbouring Local Authority
- Technical potential for very large wind
- Constrained area for very large wind

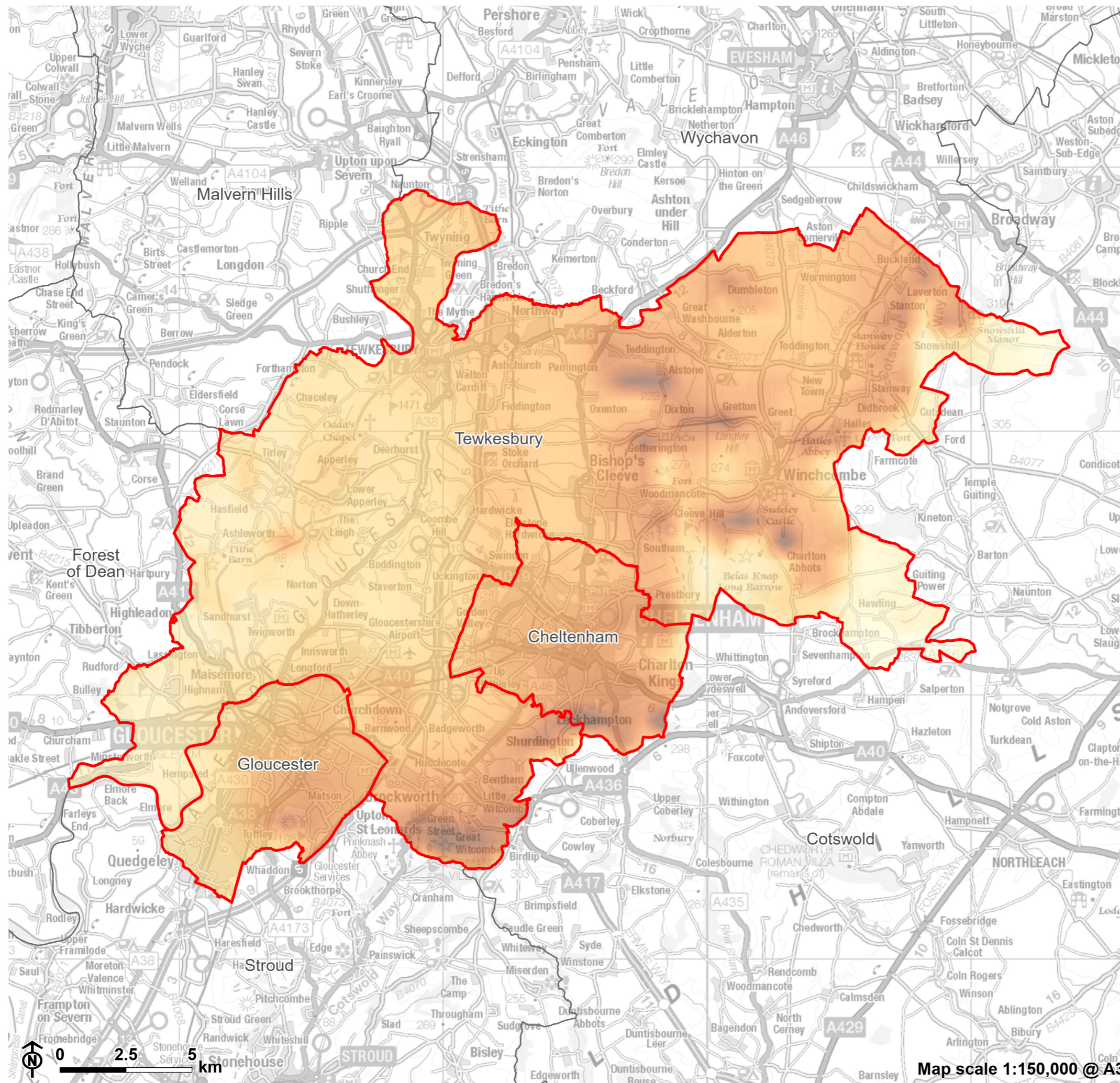


Renewable Energy Assessment  
for Gloucester City Council, Cheltenham  
Borough Council and Tewkesbury  
Borough Council



**Figure B.9: Opportunities and constraints: All scales**

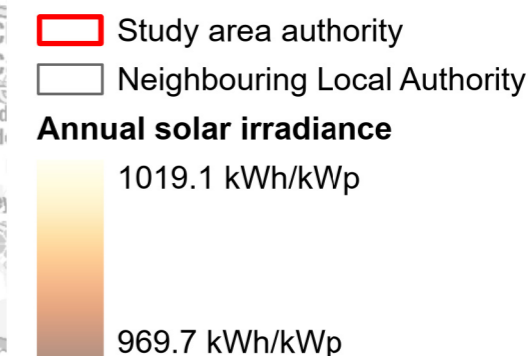
- Study area authority
- Neighbouring Local Authority
- Technically suitable area for all turbine scales
- Technically suitable area for small to large turbines only
- Technically suitable area for small to medium turbines only
- Technically suitable area for small turbines only



Renewable Energy Assessment  
for Gloucester City Council, Cheltenham  
Borough Council and Tewkesbury  
Borough Council

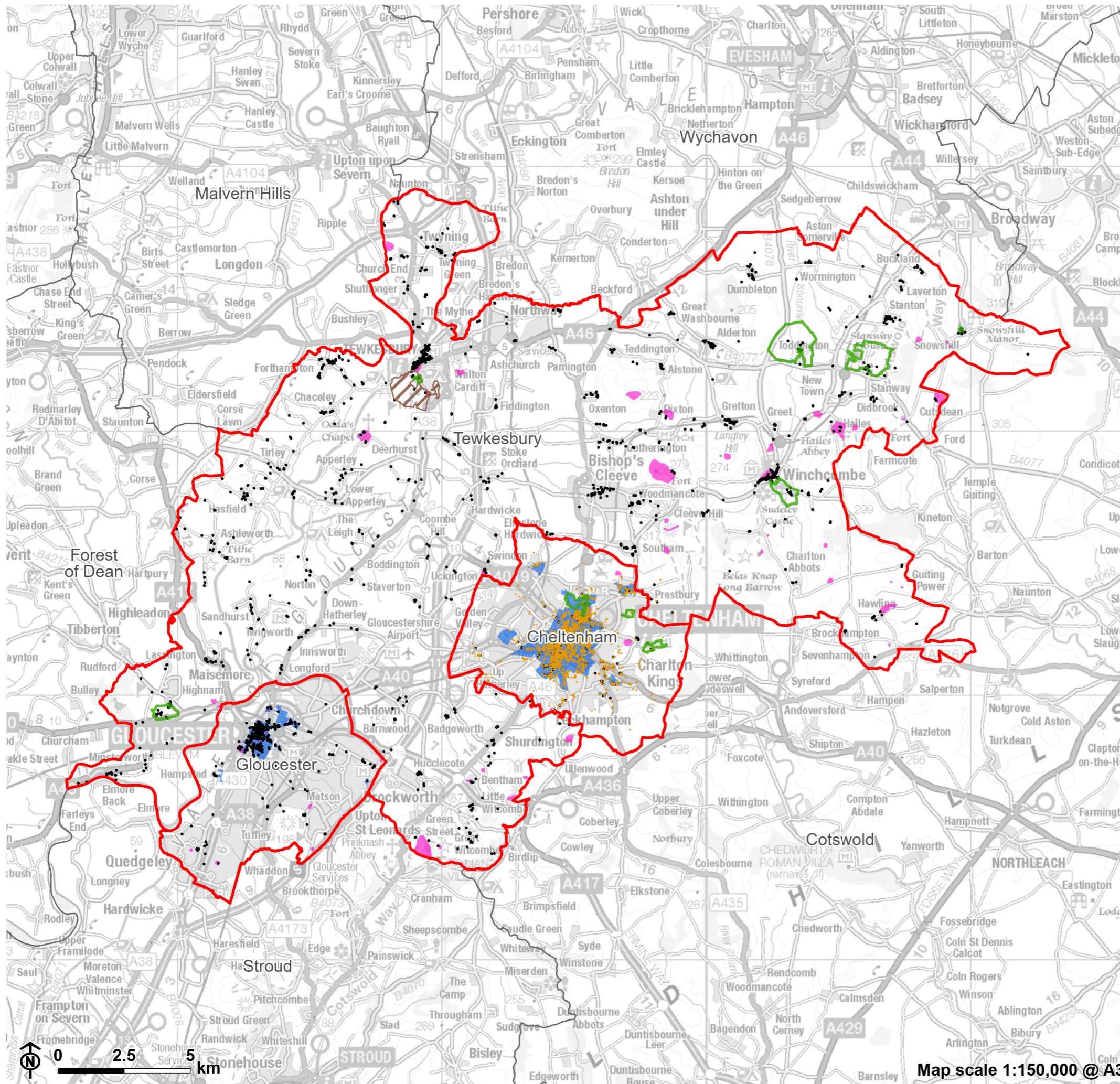


**Figure C.1: Annual solar irradiance**



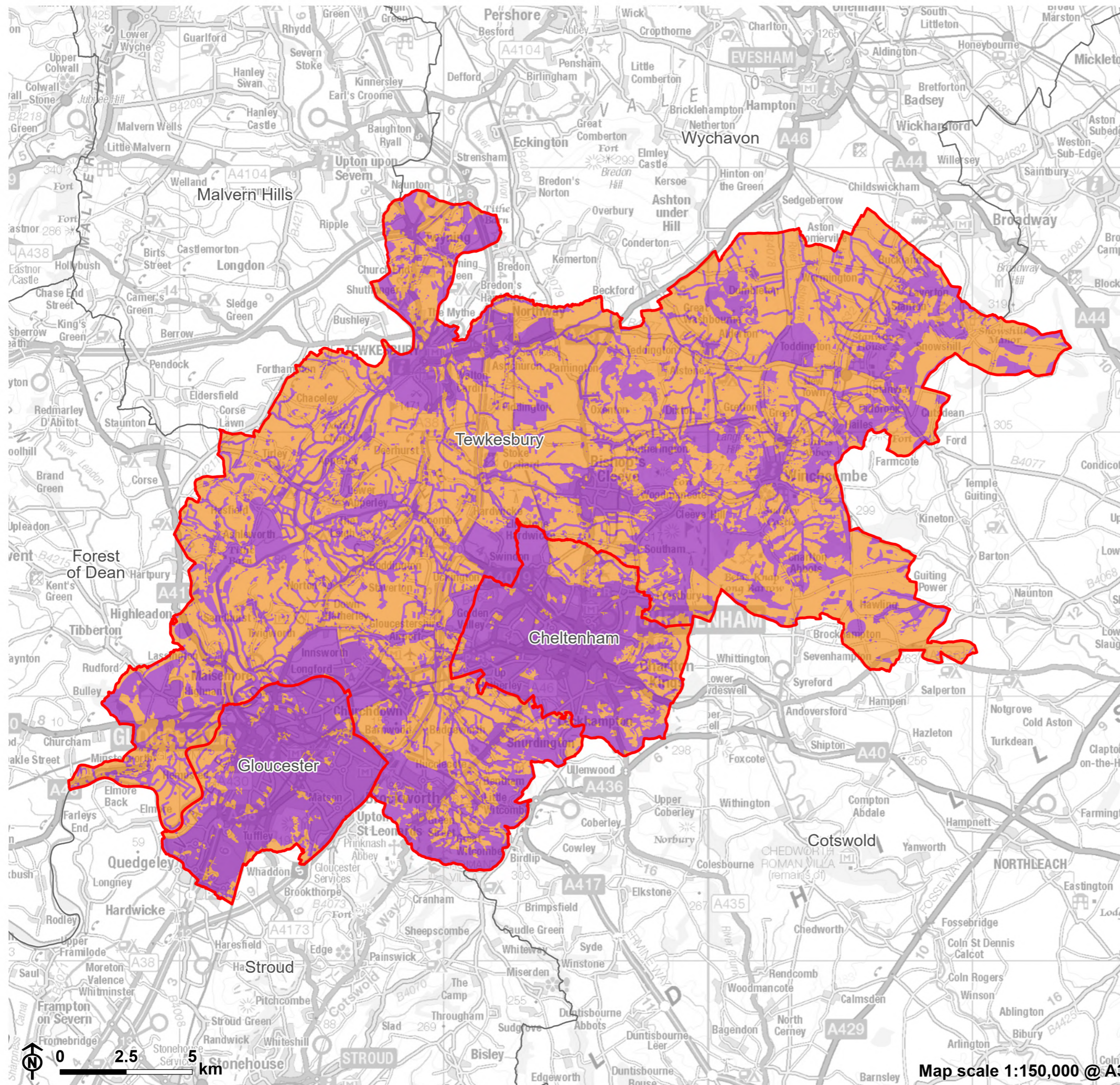
**Notes:**  
Global Solar Atlas 2.0, a free, web-based application is developed and operated by the company Solargis s.r.o. on behalf of the World Bank Group, utilizing Solargis data, with funding provided by the Energy Sector Management Assistance Program (ESMAP). For additional information: <https://globalsolaratlas.info>





**Figure C.3: Solar constraints - Cultural  
heritage constraints**

- Study area authority
- Neighbouring Local Authority
- Registered Parks and Gardens
- Registered Battlefield
- Locally Listed Building
- Listed Building
- Conservation area
- Scheduled Monument

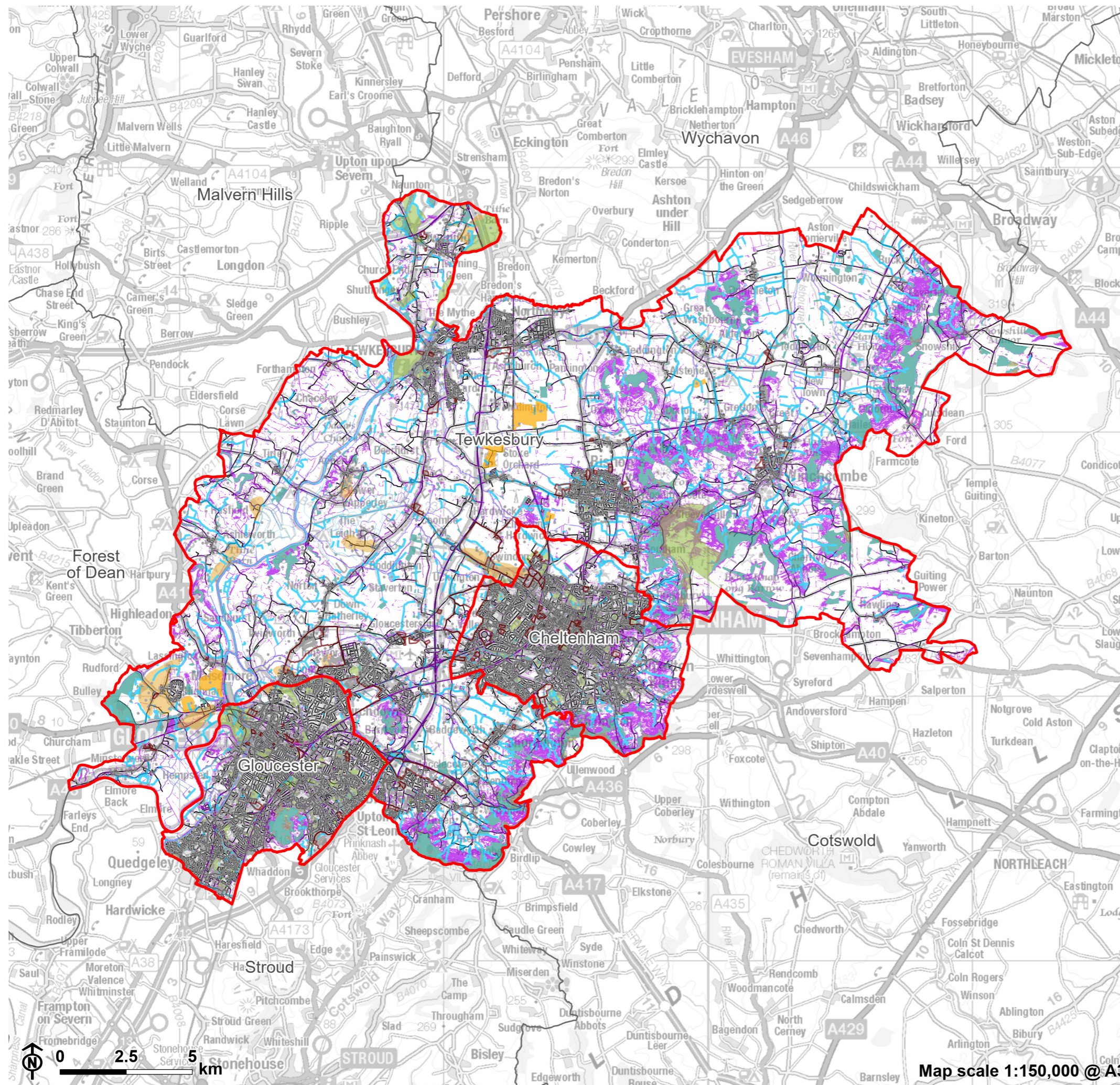


Renewable Energy Assessment  
for Gloucester City Council, Cheltenham  
Borough Council and Tewkesbury  
Borough Council



**Figure C.5: Opportunities and constraints:  
Solar development**

- Study area authority
- Neighbouring Local Authority
- Area with technical potential for solar development
- Constrained area for solar development



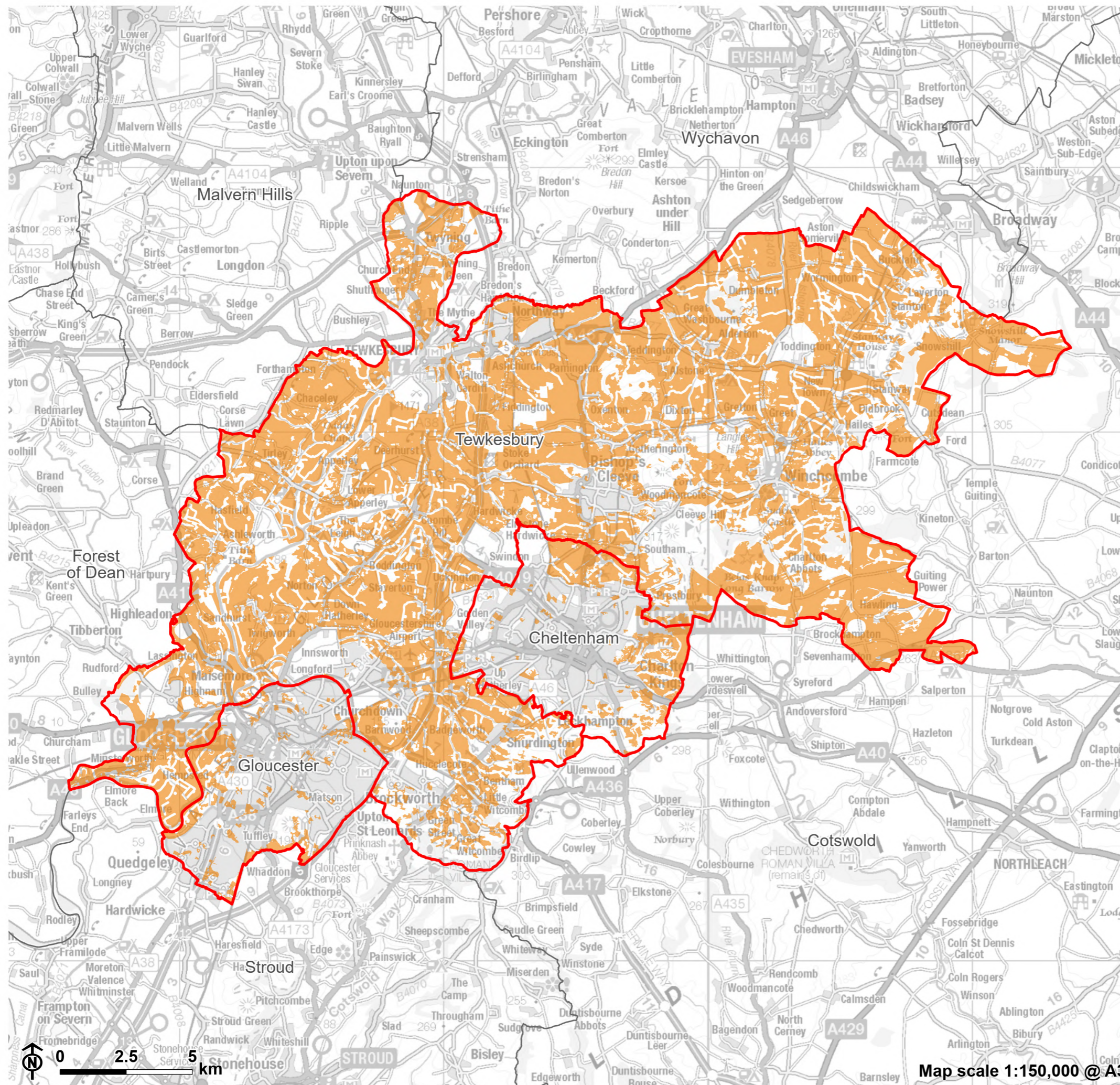
Renewable Energy Assessment  
for Gloucester City Council, Cheltenham  
Borough Council and Tewkesbury  
Borough Council



**Figure C.4: Solar constraints - Physical, land use and infrastructure**

- Study area authority
- Neighbouring Local Authority
- Roads and railways
- Building
- Watercourses and water bodies
- Existing renewable development
- Slope above 15° or slope above 7° and north-east to north-west aspect
- Designated open space
- Woodland
- Future developments, safeguarded land and employment sites
- Minerals and waste sites
- Grade 1 agricultural land

**Notes:**  
MOD land was also treated as a constraint.  
However, due to the sensitive nature of this data,  
this is not presented on this map.



Renewable Energy Assessment  
for Gloucester City Council, Cheltenham  
Borough Council and Tewkesbury  
Borough Council



**Figure C.6: Opportunities for solar  
development**

- Study area authority
- Neighbouring Local Authority
- Area with technical potential for solar  
development